



SPICE UP YOUR SEX LIFE

WITH
FC2 FEMALE CONDOM

SEXY TIPS FOR USING FC2

- **DOUBLE YOUR PLEASURE!** Ask your partner to gently and slowly rub the outer ring on your clitoris before insertion.
- **PLAY A LITTLE GAME OF SHOW AND TELL!** Insert FC2 while your partner watches or alternatively, ask your partner to insert it for you!
- **FEEL THE HEAT!** FC2 is made from Nitrile which warms to your body's temperature, so both you and your partner can feel the heat.
- **MAKE IT SLIPPERY!** Add more lube to the inside of FC2. You can use oil or water based lubricants with FC2 so be creative.
- **KEEP IT SPONTANEOUS!** Because FC2 can be inserted in advance of having sex, you and your partner don't need to stop and put on a condom in the heat of the moment.
- **NO STOPPING NOW!** Your partner doesn't need to be erect to use FC2. If your partner loses an erection during sex, no worries and no need to stop or withdraw. Hang in there and keep going.
- **MORE CUDDLE TIME!** Since you are wearing the condom, your partner does not have to pull out right away when you're both finished.



**DUAL
PROTECTION**
in preventing
pregnancy and STIs



**LATEX
FREE**



**HORMONE
FREE**



**WELL
LUBRICATED**



The only
**FDA
APPROVED**
female condom



Comparable
**HIGH
EFFICACY**
to male condoms

ORDER FC2 ONLINE...
AND HAVE IT DISCREETLY DELIVERED TO YOUR HOUSE
Find on Amazon.com, Walgreens.com, CVS.com, and shopfemalehealth.com.



The Female Health Company
515 North State Street, Suite 2225
Chicago, IL 60654

For more information visit:
www.fc2femalecondom.com

Twitter: @FC2USA

Facebook: FC2 The Female Condom

STEP-BY-STEP INSTRUCTIONS

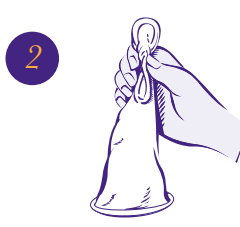
Once you get the hang of it, the FC2 Female Condom is easy to use. With a little practice you'll soon become very comfortable with it! Try it at least three times and you'll see why FC2 is a great choice for both women and men.



Open the Packet

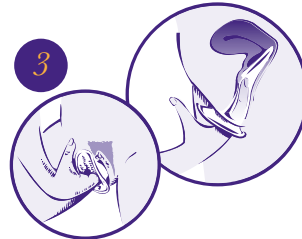
Locate arrow and carefully tear down from the notch on the top of the package.

DO NOT USE SCISSORS OR KNIFE TO OPEN.



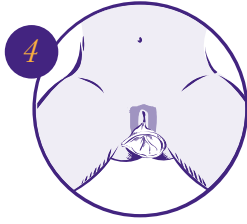
How to Hold

Hold the condom at the closed end, open end hanging down. Grasp the flexible inner ring and squeeze with the thumb and middle finger so it becomes long and narrow.



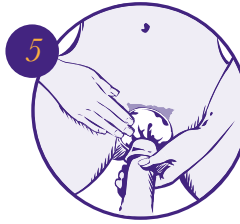
Choose a Position and Insert

Squat, raise one leg, sit or lie down. Gently insert the inner ring into the vagina. Push the inner ring up and back into the vaginal canal, moving it into place. **Push the condom as far as it will go – near pubic bone.** Make sure it is not twisted. The outer ring remains outside the vagina.



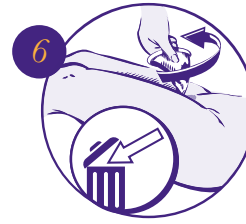
Ready for Use

FC2 Female Condom is now in place and ready to use with your partner.



Guide

Gently guide your partner's penis into the vagina. Make sure that it enters properly. Once the penis is inserted, if there is discomfort, withdraw the penis and reposition the inner ring (discomfort can be caused by the inner ring bumping against the cervix when FC2 is not properly inserted).



Removal

To remove the condom twist the outer ring and gently pull the condom. Wrap the condom in the sachet package or tissue and throw into the garbage.

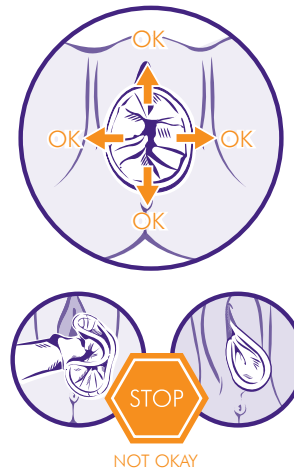
DO NOT FLUSH. DO NOT REUSE.

PRODUCT DETAILS AND USE

- 1 The polyurethane inner ring is used for insertion and to hold the sheath in place during intercourse.



- 2 Be sure that the penis is not entering on the side or between the sheath of the vagina wall. Make sure that the outer ring is not pushed into the vaginal opening, it should remain outside, covering the labia.



IMPORTANT INFORMATION * Natural rubber latex condoms for men are highly effective at preventing sexually transmitted infections, including HIV/AIDS, if used correctly. * If you are not going to use a male natural rubber latex condom, you can use the FC2 Female Condom to help protect yourself and your partner. * The FC2 Female Condom only works when you use it. Use it correctly every time you have sex. * Before you try the FC2 Female Condom, be sure to read the directions and learn how to use it correctly.

RISKS OF USING THE FC2: Use the FC2 Female Condom correctly every time you have sex. If the FC2 is not used correctly every time, your risk of getting a sexually transmitted infection or becoming pregnant will be higher. Incorrect use may result in the FC2 not providing protection. To avoid risk of incorrect use, read the instructions carefully prior to use. Research has shown that the following events are rare but can occur when using the FC2: discomfort during insertion, pain after insertion, before sex, discomfort during sex, burning sensation, rash or itching

BENEFITS OF USING THE FC2: Using the FC2 during sexual intercourse can help protect against getting a sexually transmitted infection or getting pregnant. The FC2 does not contain natural rubber latex. The FC2 provides women with an option for protection which they can initiate. Women can insert the FC2 ahead of the sex act. This allows for a more spontaneous act because an erection is not needed to insert the FC2.

For more information please contact us at: info@fc2.us.com or 1 (800)-274-6601

www.fc2.us.com